

Good quality 6mm F-green tinted safety tempered glass manufacturer

About 6mm F-green tempered glass

6mm F-green tempered glass, we also call 6 mm light green tempered glass, 6mm F-green hardened glass, 6mm light reinforced glass, 6mm F-green toughened glass etc. It is produced by heating annealed glass to over 600°C and then cooling it rapidly, in this way, it locks the outer surfaces of the glass in a state of high compression, and the core or center of the glass in compensating tension. Edge polished, drilling holes, cutout and safety corner can be request for tempered glass, but all these requirements must be done before tempering. It is a kind of safety glass and very popular in both commercial and residential building material.

Specification:

Thickness: 6mm, other available thickness such as 4mm F-green tempered glass, [5mm F-green tempered glass](#), [8mm F-green tempered glass](#), [10mm F-green tempered glass](#).

Color: F-green, Other available color such as: dark green, Ford blue, dark blue, Euro Frey, dark Frey, Euro bronze, dark bronze.

Size: Max size 3000*8000mm, min size: 300*300mm

Cutout: All kinds of cutout can be done, suit for different kinds of hardware accordingly.

Drilling holes: The diameter of the glass hole must be bigger than the thickness of the glass.

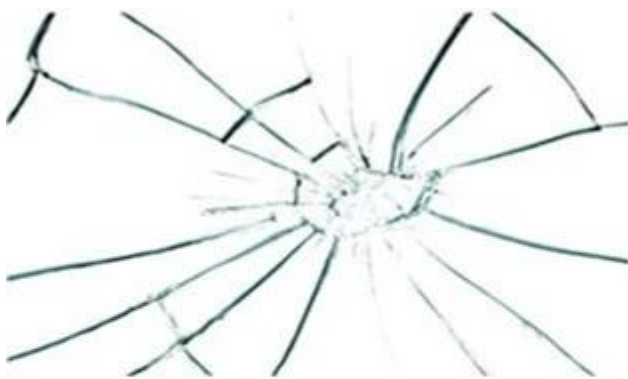
Edge work: Flat polished edge, beveled edge, waved edge, OGEE edge, triple OG edge, etc.

Safety corner: Safety corner can be done to protect the glass damaged from corners when the strike happen.

Characteristic of 6mm French green ESG glass

- 1.High security: When the glass by external damage, the debris will be similar to the honeycomb obtuse broken small particles, not easy to cause serious harm to the human body.
- 2.High strength: The same thickness of the tempered glass impact strength is 3 to 5 times the ordinary glass, bending strength is 3 to 5 times the ordinary glass.
3. Heat stability: Tempered glass has good thermal stability, can withstand the temperature difference is 3 times the ordinary glass, it can also bear the temperature difference of 300 °C

6mm F-green float glass VS 6mm F-green tempered glass



As you can see, standard glass breaks apart into large dangerous pieces.



Tempered glass breaks into many small pieces with less sharp edges.

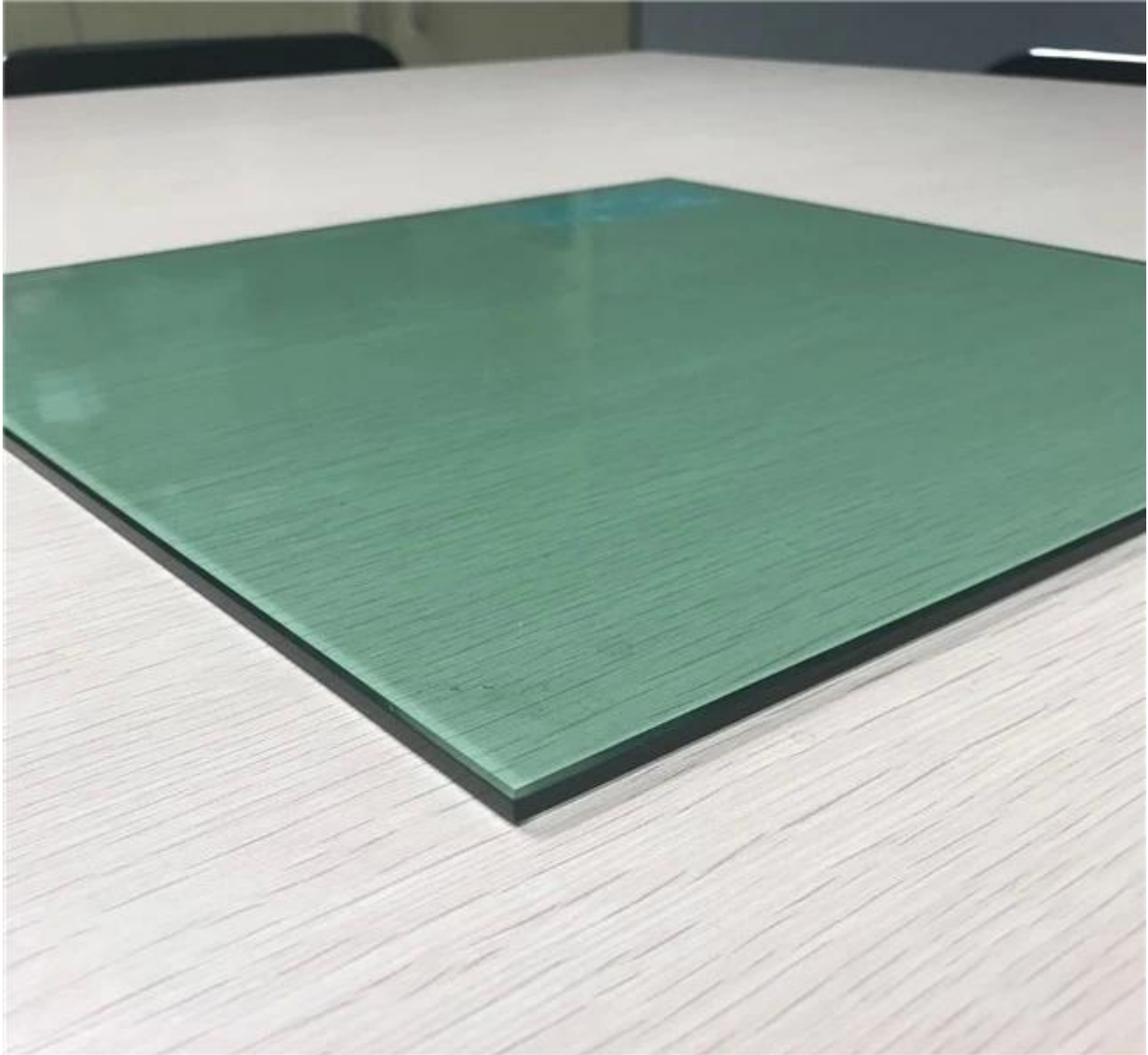
Application

1. 6mm F-green tempered glass. It can be used as solar control window glass, decorative table top glass.
2. When laminated with other glass panels, it can be used for safety railing glass, or decorative partition wall glass.

3.While insulated with other glass sheets, it can be used for energy saving exterior wall.

Except 6mm F-green tempered glass, other safety tempered glass you can get from JIMY GLASS such as : 6mm clear tempered glass, 6mm low iron tempered glass, 6mm dark green tempered glass, 6mm dark Frey tempered glass, 6mm Euro Frey tempered glass, 6mm dark blue tempered glass, 6mm light blue tempered glass etc.

6mm light green tempered glass



Production line of 6mm F-green toughened glass



Package of 6mm F-green color tempered glass

