

1/2" safety tempered PVB laminated clear glass

What is 1/2" tempered PVB laminated clear glass?

1/2" tempered PVB laminated clear glass 12mm thick, it's a kind of strong and safety glass, composed of two pieces of [1/4" tempered clear safety glass](#) with 0.76mm / 1.14mm / 1.52mm clear PVB. Use how thick PVB, depends on the glass sizes, and whether there is holes or cut notches on the glass. Generally, if one piece glass area is less than 1 square meter, without holes or cut notches, we could use 0.76mm PVB; If one piece glass area is over 1 square meter, and without holes or cut notches, we could use 1.14mm PVB; or we at least need to use 1.52mm PVB to make sure no any quality problem.

Specification of 1/2" tempered PVB laminated clear safety glass

Composition: 1/4" (6mm) clear tempered glass+0.76mm / 1.14mm / 1.52mm clear PVB+1/4" (6mm) clear tempered glass

Thickness: 1/2", 12.76mm, 13.14mm, 13.52mm

Size: custom cut to size, flat maximum size 2440x6000mm, curved maximum size 2440x5500mm, minimum radius 450mm

Processing: polish edges, drill holes, cut shapes, cut notches, do safety corners, frost, paint or silk print, digital print, if required

Feature: super strong and security, sound insulation, anti-ultraviolet, energy saving, create aesthetic sense to building, and much more

Quality: no bubbles, no defects, super flat and smooth surface, 100% will not delaminate, very good alignment within 1mm, with European CE and American SGCC certificate

Package: all the glass pack in export plywood crates as strong as possible

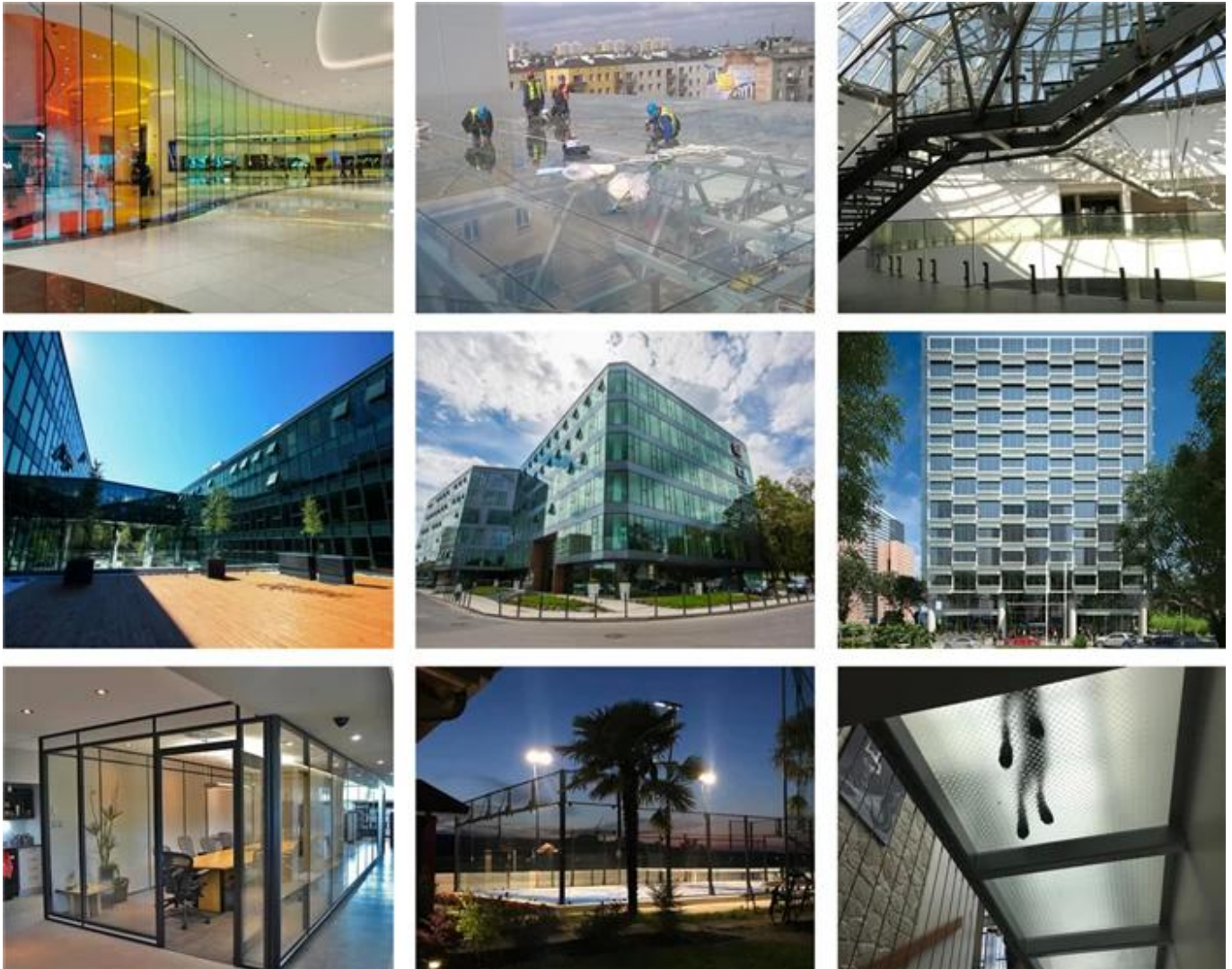
Production time: 10-15 days after order is confirmed

Others: Except clear laminated glass, we also could do other colors like white, bronze, blue, black, green, golden, etc.; except 1/2" 12mm thick, we also could do 17.52mm, 21.52mm, three layers, four layers, other customized thickness; except tempered, we also could do non-tempered, heat strengthened, heat soaked, and so on



1/2" tempered PVB laminated clear safety glass usage

Because of the high performance of the 12mm clear tempered laminated glass, it is very popular to used for shower screens, [balustrades](#), floors, exterior spider walls, balcony railings, skylight roofs, partition walls, large shopfronts, padel courts, and much others.



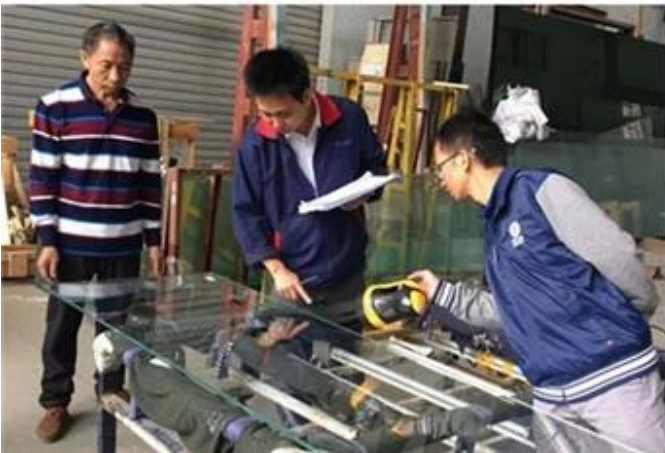
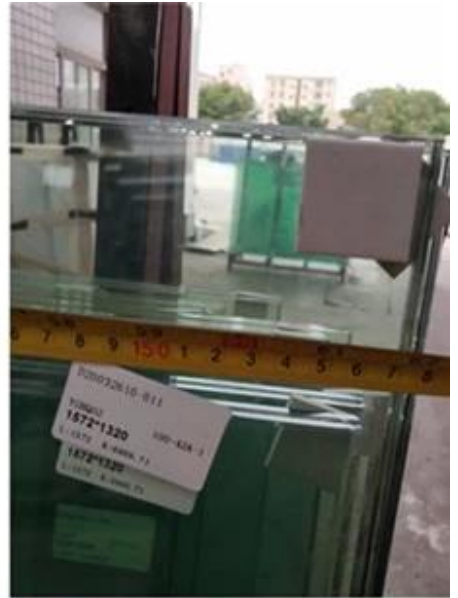
Why buy the 1/2" clear PVB tempered laminated glass from us?

1. We have professional [sales and engineers](#), to understand exactly what you want
2. We have advanced machines and skillful rich experience workers, to produce the high quality glass products
3. We have strictly responsible QC, to make sure every piece glass come out from our factory is in very good condition
4. We have three production bases, to make sure the fast production time, generally, 10-15 days
5. We have strong export plywood crate packing, to make sure no damage during delivery

Factory view



Carefully inspection



Strong packing and safety loading

