

Customized 19mm monolithic tempered glass & double laminated glass fins

About Glass Fins:

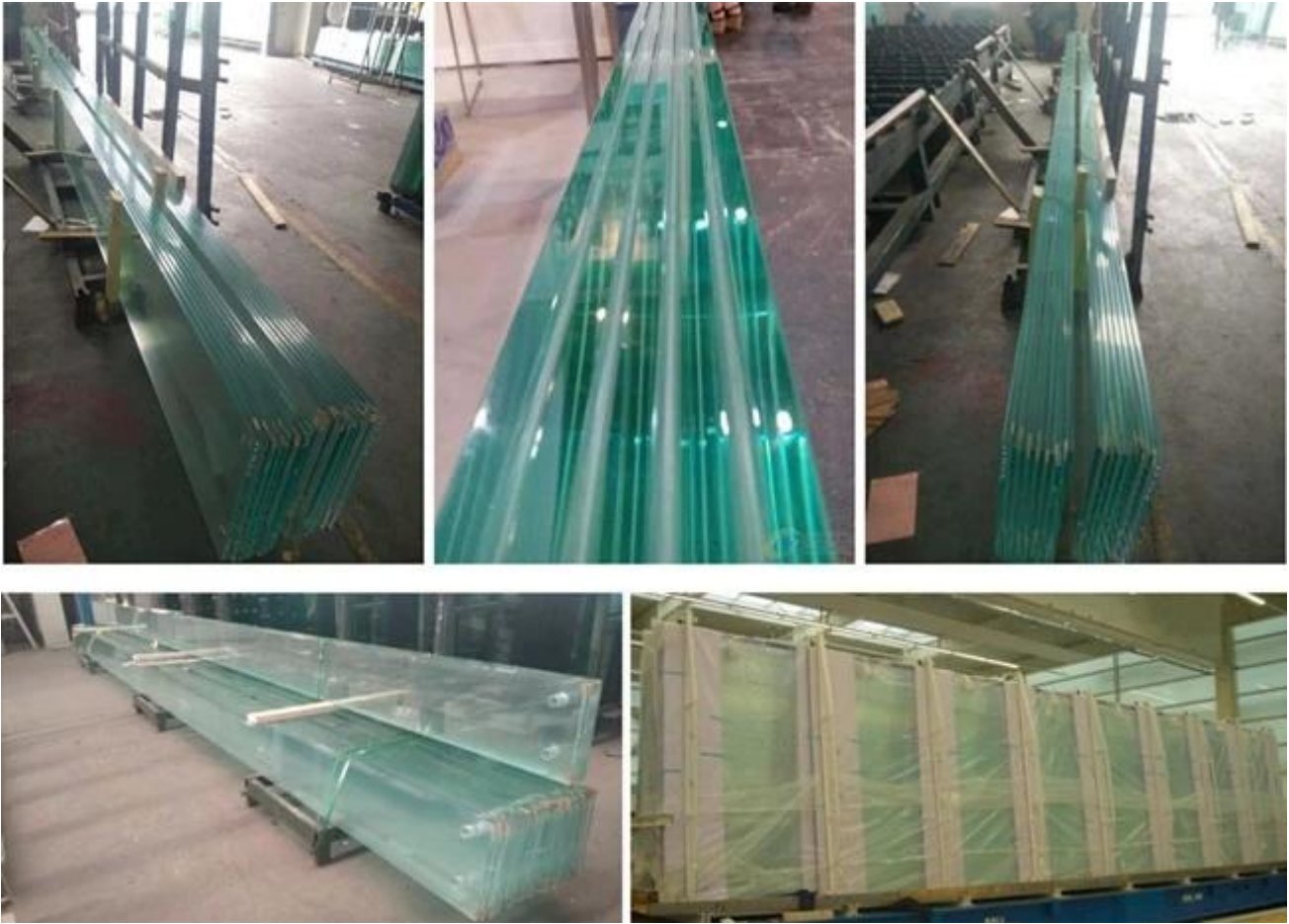
Glass fins are quite simple in notion, utilizing a glass fin set perpendicular to the glass panel at each vertical line of the glass grid. The Point supported glass fin walls is a potential solution to get offer a highly transparent, modern look to any building. Architectural bolted glass curtain wall, it is possible to construct frameless and seamless designs using toughened and toughened laminated glass. In our daily life, Glass fins widely used on the structural glass facade, window glass, skylight glass, glass wall, glass partition, glass balustrade, etc.

For the glass fins possible use of any kind of glass that is needed for the different application, such as : [silk-screen printed glass](#), digital printed glass, [tempered laminated glass](#), curved/bent glass, etc in any color and design.

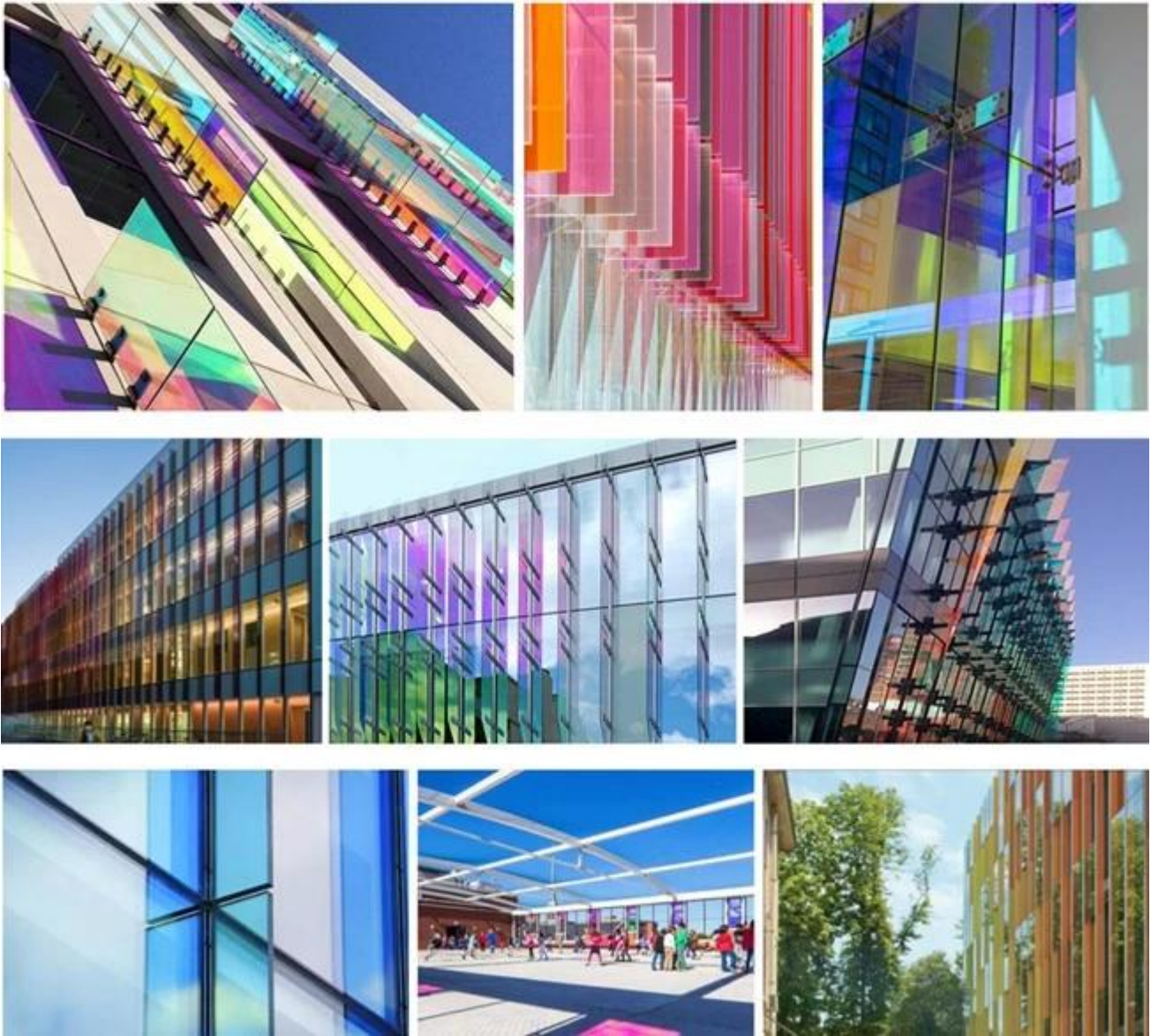
Tempered glass fins VS laminated tempered glass fins

1. For monolithic vertical tempered glass fins hung from structure above, with mechanical bolt fitting connections and tended to be extremely deep, taking up over two to three foot of precious lobby/retail space at the base.
2. Laminated glass fins when viewed from the inside on an angle or from directly behind which may not match up cleanly between multiple laminated plies and may have some offset
3. Double Laminated Glass thickness considered a visual imperfection in some cases
4. The single panel tempered glass fins the cost is cheap than the same thickness double laminated tempered glass fins.
5. The double glazing fins is more safety , stronger and durable than monolithic glass fins.

High quality [Large size tempered glass](#) or jumbo size tempered laminated glass for curtain wall glass fins



Bright and [colorful laminated dichroic Glass](#) Fins facade



large size tempered glass used on glass wall fins



Jumbo size glass partition wall fins

