

# China translucent decorative U profile glass

## Introduction

U profile glass, also named U shaped glass, U channel glass, is a kind of new construction glass, can be annealed U glass, also can be U shape [safety tempered glass](#). It has so many outstanding advantages, such as irreplaceable decorative effect, ideal light transmission, good sound insulation, excellent heat insulation, reservation and convenient installation, etc., which make it more and more welcome in architectural buildings.

## Characteristic

Bigger installing span, various shapes	<ul style="list-style-type: none"><li>- Compared with general glass, U profile glass has better mechanical strength, allows a bigger span during installing and does not need additional supporters.</li><li>- It can be installed in both the vertical and horizontal direction, so various kinds of arc-shaped facades and walls can be realized by U channel glass.</li><li>- Matched aluminum alloy frames could increase the intensity of the structure, and the method of installing is varied.</li></ul>
Ideal light transmission, good sound insulation, excellent thermal insulation	<ul style="list-style-type: none"><li>- U-glass different coatings could create various effects of light transmission, and if matching with lights, U shaped glass can create the effect of light rays, which is unapproachable for other materials.</li><li>- Frosted U channel glass has excellent sound insulation performance, which could reach 42 decibel when is not sealed, and 44 decibel when it is matched with thermal insulation materials.</li><li>- When installed in double layers, the U-profile glass provides perfect performance of heat protecting and thermal insulation.</li><li>- With excellent refraction performance, U-glass can effectively reduce light pollution.</li></ul>
Can produce to safety tempered U glass	<ul style="list-style-type: none"><li>- After being heated in the reinforcing furnace, the load-carrying capability of the surface of the glass could reach 10000 PSI or more.</li><li>- The intensity of reinforced U-glass is 3-4 times that of common U-glass.</li><li>- it is harmless glass, because the reinforced U-glass fragments are normally small after breaking and don't have sharp edges.</li></ul>
Safe property, low maintenance cost	<ul style="list-style-type: none"><li>- Main material is 100% recyclable and green.</li><li>- There is no auxiliary adhesive except silica gel, no pollution.</li><li>- Very convenient cleaning and maintenance.</li></ul>

## Physical Properties

Mechanical strength	Fire resistance	Chemical stability	Tensile strength	Mohs Hardness	Modulus of elasticity	Coefficient of linear expansion
---------------------	-----------------	--------------------	------------------	---------------	-----------------------	---------------------------------

700-900N/mm <sup>2</sup>	0.75h	0.18mg	30-50N/mm <sup>2</sup>	6-7	60000-70000N/mm <sup>2</sup>	75-85X 10 <sup>-7</sup> Temperature increase of 1 degree Celsius
--------------------------	-------	--------	------------------------	-----	------------------------------	---

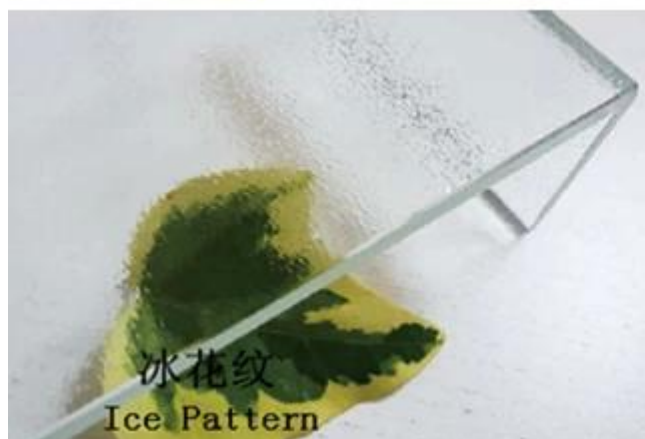
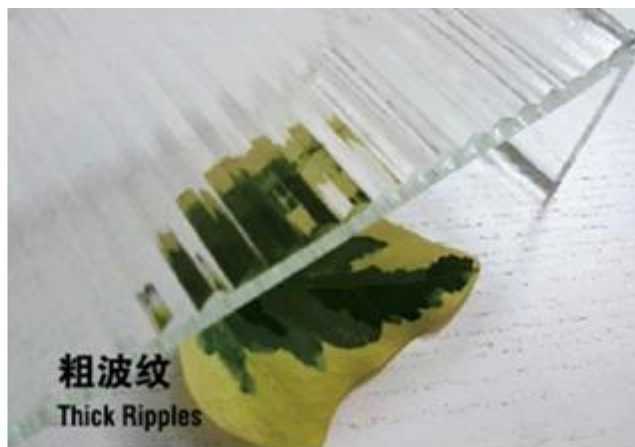
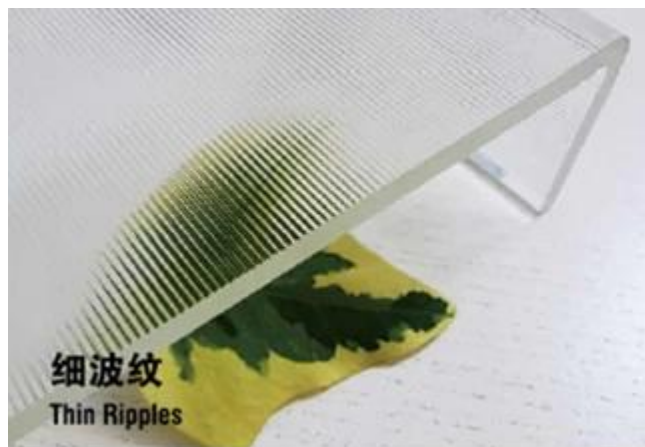
Type	Light transmittance single wing	Light transmittance double wing	Heat transfer coefficient single wing	Heat transfer coefficient double wing	Sound insulation capacity single wing	Sound insulation capacity double wing
U profile glass Ordinary fine lines	88%	80%	4.9W/m <sup>2</sup> k	2.35W/m <sup>2</sup> k	27db	38db

### Specification

Width(mm)	Flange Height(mm)	Glass thickness(mm)	Max. Length(mm)	Weight (single layer)(KG/M <sup>2</sup> )
232mm, 262mm, 332mm	60mm	7mm	6000mm	25.43KG/M <sup>2</sup> , 24.5KG/M <sup>2</sup> , 23.43KG/M <sup>2</sup>
Surface embossing types		Transparent super white, ice pattern and ripple (thick ripple and thin ripple), special patterns can be produced as per customers' requirements.		
Glass coating		Low radiation, sky blue, ceramic color, sand blasting process, etc.		

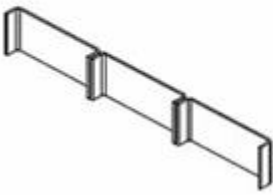
### Application

Based on all the perfect characteristics, the U profile translucent glass is widely used for airports, railway stations, stadiums, factories, office buildings, hotels, homes, greenhouses and other industrial and civil construction of interior or [exterior walls](#), partitions, [windows](#) and [roofs](#).

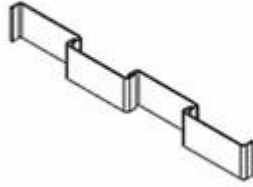




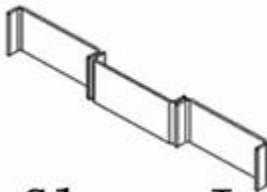
(1)Single Glazing  
Flange inward or outward



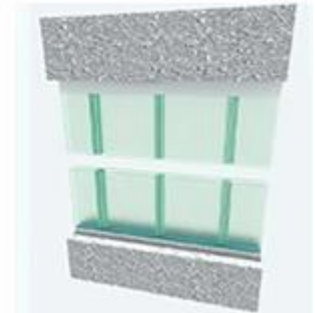
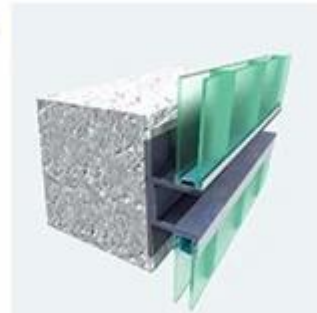
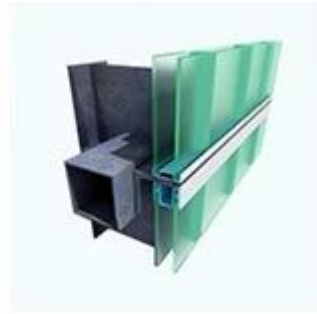
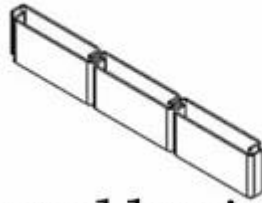
(2)Single Glazing  
wedge-shaped,Mutual occlusion



(3)Single Glazing  
wedge-shaped,Flange glue



(4)Double Glazing  
Flange is placed in the joint



## U Glass Installation



## U Glass Application